

S 2 2 - 2 - 2 HCCRH -- - - 2 - -

- - 2 2 HCCRH -- - - - - - 2 2 2

- 2 -- 2 2 - - -2 -

- 2 2 2 - -S 2 - 2 2 2 ,

2 0.2-1 R 2 G 2 G2- R 0 -

N R 2 'N F 2 B (2 0 0 0

2 - ' / 43 0-05 1-25 3-1/ (2 2 -2 2 0 ,

2 - / 0 1 2 2 2 E2 S - 2 HCCRHS -

- 2 - - CGQ-1 2 'S@H- - M

B - TR@ 2 - - 2 ' < 3/ <

1- / 7 (-@ - - 2- 2 - / 43 0-05 1-25 3-1/

4/ -0 2 26.1 73.0 1/5.3 323.5 O - - ,

- @2 15 - - -- -- 2

- - - V C S - - R - 2

S - 'U-URS(- 2 2 2 ' 2 - 2 ,

2 - 2 - 2 2 - (- 2 'E 0(-

R 2 2 2 - 2 - 2 - 2 - -

L 2 2 - - 2 - 2 2 - - 2

- 0 - - - 2 - 2 - 2 HCCRH 0 ,

-- 0 - - 2 - 2 - 0 - 'E -1(

2 - 2 HCCRH 2 2 0 ,

2 --S - 2 - 2 2 0

C-Q D 2 T - 2 K - TJ 00 - 2 2 C 1/05 - -

C-O R 22 2 L 0 - 2 @ T 0 - 'M 0 (- 2 2 2 L 06 - - ,

2 -O 00 - 2 00 2 -2 2 2 00 (2 2 - 2 - 2 - - - -

C-G F - 2 T - 2 C TJ ' 2 T T - S M -(2 - - ,

- 2 2 @ 5 L 3 -G - 2 H 2 2 T - -

C-R O - 2 P 0 - T - '@- (00 - 2 - 2 2 2 @ 06 07 -R -

- - - 2 - -2 -- 2 2 2 - --

C-B -2- Q 2 - - 2 - 2 --2-B 2- - 2 2 2 2 2 0 -

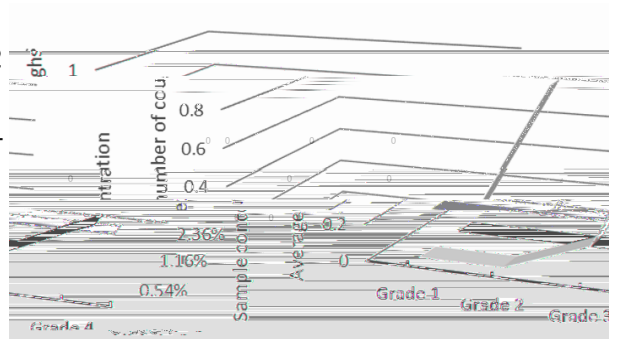


Figure 1: Coughir number when swallowing 20ml samples for patients at different grades as assessed by the Water Drinking Test.

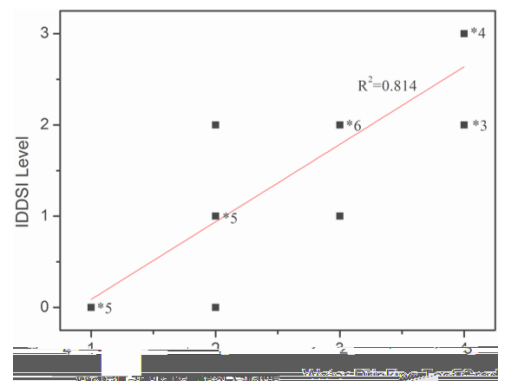


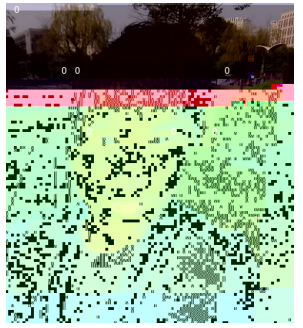
Figure 2: A plot of the IDDSI texture level against the number of swallows completed as assessed by the Water Drinking Test. The number next to asterisks refers to the number of samples at that same point.



F2 2 2 O2 - R 22 2
 L 10' 1/06- G - 2 2 R 22 O2 -
 I 2 G - R 22& 2 22 -2 E22
 N O2 -- 2 2 -S 2 2 - 2 R 22&
 2 - - 2 - -
 -G -- - 2 2 - 22 - 2 2 O2-I -
 B 2 K - 2 F2 - T - - -
 - 2 2 - 2 2 2 22 2 2 -- - 2
 2 2 2 - 0 0 0 0



2 2 - 2 L - 2 E22 N O2 -- Q- F 2 2 C ,
 1/05-G 2 - 2 E22 R M 2 ' 2 2-(TBRHT -
 L - O C E22 D T - O L - -G 2 - S 2 -
 T - L - 2 2 2 C - 2 H 2 B2 R 2 -M2
 - 22 E @2 - 'B (B2-K 2 2 2 - -- 2 2 -G -
 2 2 2 - 2- 2 2 2 -



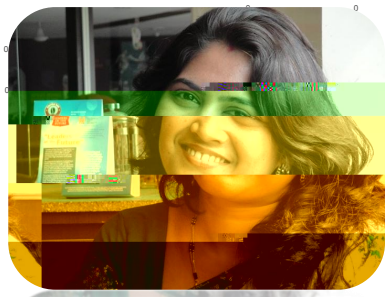
2 E22 N O2 -- ,
 - 2 - O2 2 2 E 2 -G 2 - A 2
 O C B ° D 2 S T - 2
 P - -G- O C 2 ° - 2 - 2 22 2
 - 2 - - -- G- 2
 F2 - T - 2 - 2 - 2
 2 2 2 2 22 2 2 - ,
 2 -G - 2 2 22 ,
 2 2 - -2 2 2 -

2 - 2 J - H
 2 - AR A2- 2 T -
 2 J - -G - LR A2 -
 - 22 -G - - O C
 E22 R 'ORT S (2 -
 2- 2 2 - A2 22 O ,
 'TRL L - (-R - -
 L 2 T - 2 14 -
 22 - -G 2 ENO -
 2- 2, 2 - -
 22 2 - 2 2 2 -
 - - 2 - -2 2 --

A2 22 2 A - T -
 LR E22 S 22 2 @ T - -G
 - O C D R - 'E22 R
 D (2 BRIO-B E22 S 22 ,
 Q- H- 'H (-G 2 - ,
 --2 HECOS H O C-
 G - 2 A - Q - @ 2 1/03.1/04 BRIO-BESQHG 2
 2. 2 2 2 IFRT T. - 2 K - -2- 2 2 2
 2 2 2 2 2 22 -2 - - 22 - --
 N - - -2 - 2
 - 22 -- 2 - 2 2 -- ,
 2 - - --S -- 2 ,
 2 2 - -2 - - -
 - --G - 2 ,
 - - - 2 ,
 @-2 2 - - - - ,
 2 2 - - - C-
 Q T - -22 - -



@ 2 2 - 2 2
 - 2 2 2 - 2
 - - - 2 -S
 2 - - 2 -2 P O ,
 2 2 | - 2 -



!O2 2
2 ! R I -
M - G2 C- 2
G 2 2 C 6 1/05 ,
2 C - Q D
2 T - 2 K - TJ °
2 - - ° - ° °

S 2- 2 - - 2
° - ° 2 ° °
- 2 - - 2
2 ° 2 2 -S - ° ,
° - ° -9 ,
2 2 ! 2
2 ! --- --,
2 ° ° 2 ° ° °

° - 2 2 - °
°
@ ° 2 H ° 2 C - ,
° C ° ° R ° 2 B2

° 2 B
° G2 J2 L 2 ° S
2 O2 - B -
- ° ° 2 ° 2 - - 2
- -S ,
2 - 2 ° O2 - B
° ° ° 2 ° 2 -
2- ° 2 2°
2 -S --- ° 2
2 -2
2- ° 2 - -- ° O2 -
B 2 ° 2 2 ,
2°- 2 2 ° -2 2 -
2 ° -

S ENO 2 - 2 2 2 2 2 2
T - 2 M2 -H - 2 2 -
° ° ° ° ° ° ° ° ° ° ° °



LWMZ University Consortium of Food Science and Nutrition



N - - B R 2 - B2 2 2 2 - - V
T - Q - B 'V TQ(M --
- I -R - -3H- 22 2 2 2 2 --H
22 2 2 H - H 2
- 3
- 2
- 2 2 2 2 2 2
- T - - L B - O - 2 M2 - -

M 2 -M2 06-07 1/06 G 2 B
@ 2 2 R2 L B2
3T - 2 K - @ 7-00 1/07 K - TJ-
T - 2 M2 I 0-

S 2 - 2 2 -- - DRH
- 1/059
S 9B2 - - - - E22 P
O 37 234-247-
S 2 22 2 -- 2 2 2
- 2 - 22 2 9 - - C -
2/ 1-15-

D 9- ? - - - - ? 22 - - - -
S 9'/(75 46017//78/3
E 9'/(75 46017//78//
V 9 9- - - - - 2 -- <0057
226%314 ENOK 2 2 R 22 2 E22 R A2 22
07 R I C- F2 - T - G 2 20//07 BGHW@
D 9 - 43? 22- 2

- F - R L - K - % B 1-) '1/06(- A 2
2 - - - 2 2 - - - - 2
2 - - - C - - - - 2
- R L - F - R I - K - - % B I - '1/06(- B
2 2 HCRH 2 -12 2 S R - -
- 2 -
- V -) %B I - '1/06(-E22 2 2 -- 9
2 - - - -B N 2 B2 2 °° H
R - 17 11-2/-
- L 2° B-) %B I - '1/06(- E22 -- ° 2 -9°
- - ° 2 --S - E22 R S 2 2 °
@ 2
2 -
- R ° R- T Q- A - G- % B I-) '1/06(-
R °° - 2 - - 2 2 2 3 22,
2 -12 2 S R °- 0 0-06- CNH9
0/-0000. -01155-
B ° G-%B I-) '1/06(-Q 22 22 - 2
- -2 2 2 2 2 -- A2 22°
2 2 - °
- K - B I-) %G2 - L - '1/06(- G
2 2 - 2 - ° - 2- -12 2 S
R - ° 2 ° 2°
- K K- @ S- D Q- G2 - L-%B I-) '1/06(-
O - 22 2 2 --12 2
S ° R - - 2 2 - °
- K K- A 2 2 Q@ B I - 'R ° @) '1/05(-
M ° 2 ° 2 22 2 9E22 - - 22
2 2 -- & - - - -12 ° 2
S R - 36 302-311- CNH90/'0000° - -0108/-
- B ° 2 I @ -) K O° R° B-L - G - 2 A- B I-
C - QN- C - I° J - I- K 2 B- L I-
O ° L - Q ° K-%R° - - R- '1/05(-C° 2 2 2
2 ° 22 ° ° 2 - 2
22 - - - - - 9
HCRH 2 -C - °° CNH0/'016-//344-//05-8647- -
°
- L 2- B-) %B I - '1/06(-N - - -
2 ° 22 2 - - - - -D- ° Q L 2 'D -
K-C (D- ° - - - -
- @ S- T ° Q) %B I - '1/06(-N - - 2
2 2 °° - -H N L ° ° - - 2 L 2 -F°
- B 'D°
K K- R @ %B I - '1/06(-D - -
- - - 2 2 -H M 2 E 2 E22 -
2 G @ -Q-V -2 'D - (D- - °